

# SAW GUIDE F SET



ITEM pcs./ctn.  
guide set 12

Designed to be used with Universal S-265 to cut work pieces at any angle between right 45° to left 45° either horizontally or vertically.

No.30106



## CUTTING BOARD

By attaching Sliding holder, the guide can be used for vertically square cutting of wide boards.



## VERTICAL 45° ~ 90°

By adjusting Vertical Angle Bracket, any angle cutting can be achieved from forward 45° to back inclined 45° vertically.



## PARALLEL 45° ~ 90°

By adjusting Parallel Angle Bracket, any angle cutting can be done from left 45° to right 45°.

# SAW GUIDE MINI SET



ITEM pcs./ctn.  
guide set 12

Designed to be used with Universal S-175 to cut work pieces at 90° and right & left 45° by attaching 45° angle attachment.

No.30104



UNIVERSAL S-175  
(Handle color : Green)



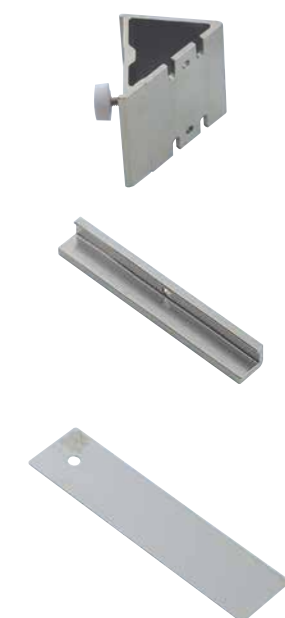
## VERTICAL 90°

By attaching orange colored Hand Grip, the 90° square cutting can be easily achieved.



## HORIZONTAL 45°

BY attaching 45° Angle attachment, 45° miter cutting can be done easily.



45 degree angle attachment :  
To cut wood at 45°

Parallel sliding holder :  
To slide cut wide board

Dummy blade (0.50 mm) :  
To adjust the guide position against cutting line on the work piece