

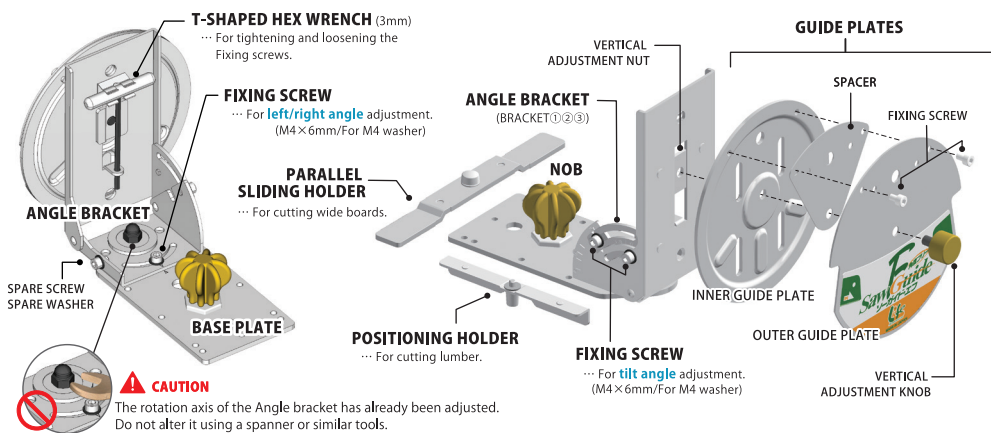


ソーガイド・エフ 鋸セット
WOODWORKING AUXILIARY TOOL

INSTRUCTION SHEET

Thank you for your purchase of SAW GUIDE F SET. Please read this instruction carefully and keep it in good condition.

SAW GUIDE F KIT

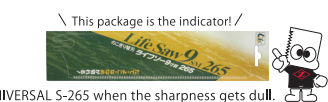
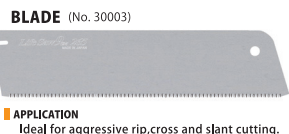


SAW GUIDE F



SAW GUIDE GAUGE

UNIVERSAL S-265

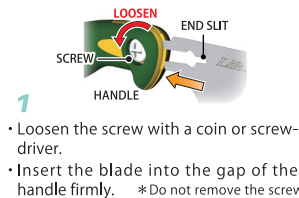


SPEC	
Blade Length	265 mm
Blade Thickness	0.60 mm
Kerf	0.92 mm
Pitch	1.75 mm (15TP)

BLADE REPLACEMENT

- Wear hand protection or wrap the blade in a cloth to prevent injury.
- Check the looseness of the screw and rattling of the replacement blades before use.

Blade attachment

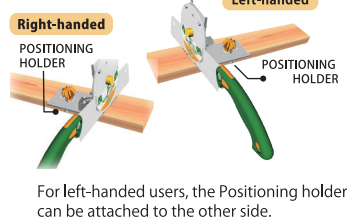
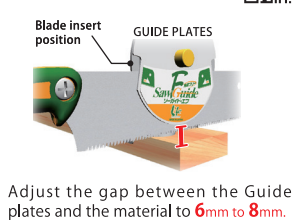


Blade detachment



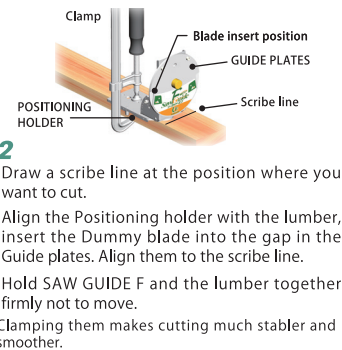
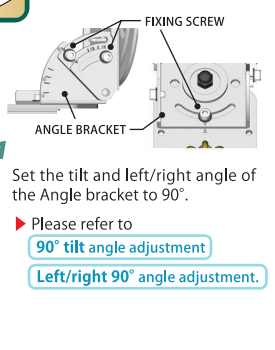
Cutting method with SAW GUIDE F

Cautions when cutting materials

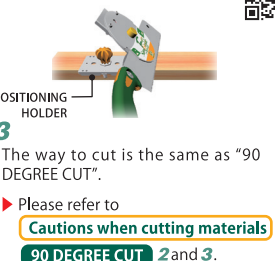
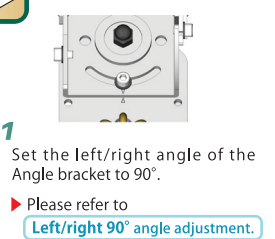


POINT
Cut slowly without using too much force.

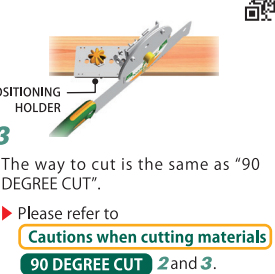
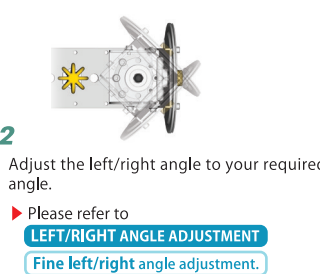
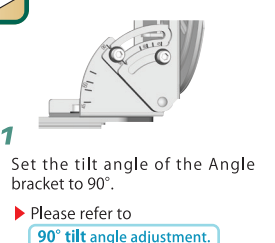
90 DEGREE CUT



BEVEL CUT



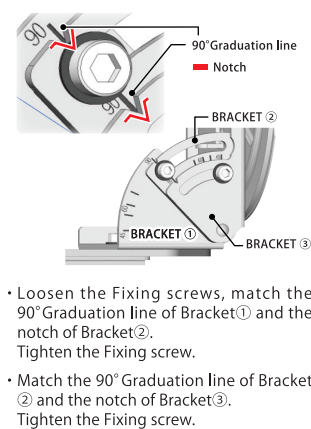
LEFT/RIGHT CUT



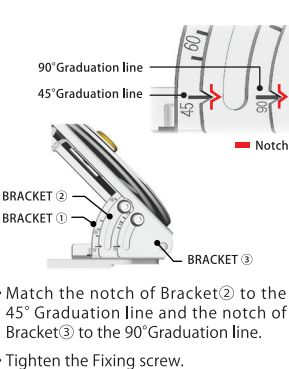
Method for adjusting the angle of SAW GUIDE F

TILT ANGLE ADJUSTMENT

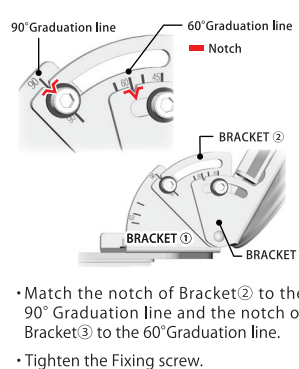
90° tilt angle adjustment



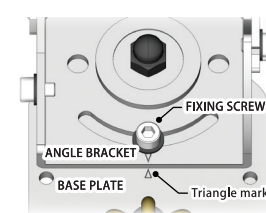
45° tilt angle adjustment



60° reverse tilt angle adjustment



LEFT/RIGHT ANGLE ADJUSTMENT



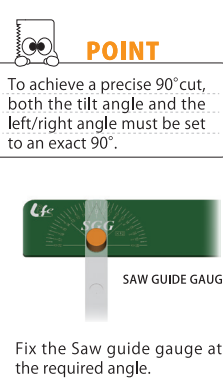
Left/right 90° angle adjustment

- Loosen the Fixing screw, match the Triangle marks on the Angle bracket and the Base plate.
- Tighten the Fixing screw.

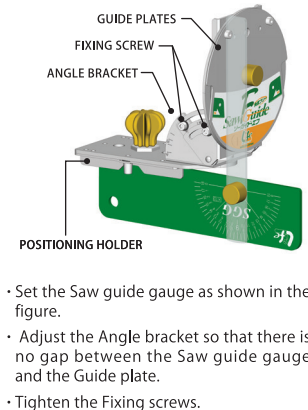
Left/right angle adjustment

- For angles other than 90°, adjust by moving the Angle bracket left and right with the Saw guide gauge.
- Refer to **Fine left/right angle adjustment** for details.

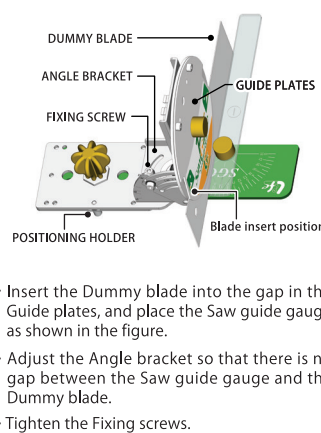
FINE ANGLE ADJUSTMENT



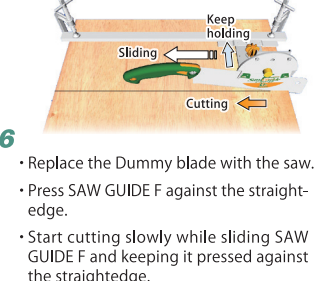
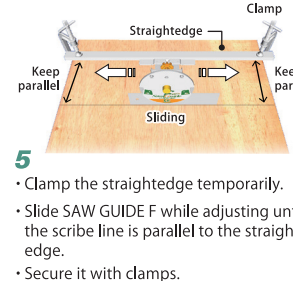
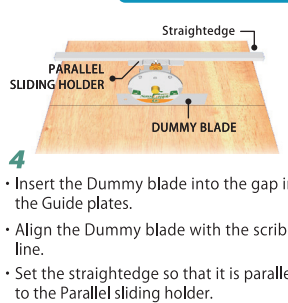
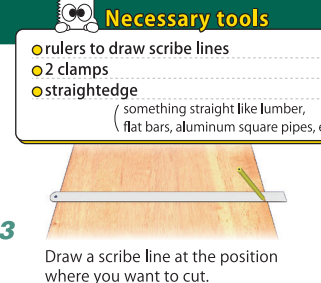
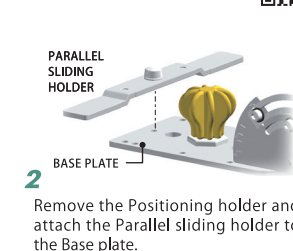
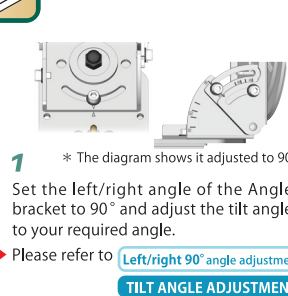
Fine tilt angle adjustment



Fine left/right angle adjustment



CUTTING WIDE BOARDS



POINT
Repeat this process until you get used to cutting.
Cutting a little → Sliding → Cutting a little

Cutting position

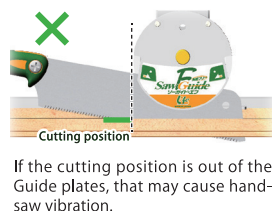
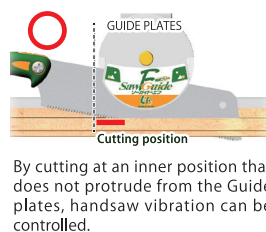
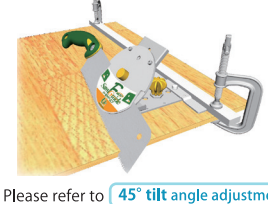


Image of cutting a wide board at 45° tilt.



CAUTION

- Note the following points to ensure long-term use.
- Do not tighten the Fixing screws too tightly, or the screws and the T-shaped hex wrench may be damaged.
- Always use UNIVERSAL S-265 for SAW GUIDE F.
- When you use saws except for UNIVERSAL S-265, the accuracy cannot be occasionally shown.
- Do not tighten the Knob with wrenches. The Screws may be damaged.
- If a strong impact is applied, the angles of SAW GUIDE F and the Saw guide gauge may become misaligned or get damaged.
- Be careful not to let the handle and the Guide plates collide when cutting. Applying impact may cause misalignment of the angles.
- Check and adjust the angles of SAW GUIDE F with the Saw guide gauge.

NOTICE

- Specifications may change without notice to improve quality.
- All rights reserved by Z Hanbai Co., Ltd.



Z Hanbai Co., Ltd.

Postal code: 673-0404
561 Omura, Miki-city, Hyogo, Japan
TEL: +81-794-83-2001 E-mail: sales1@z-saw.co.jp

ZETSAW



https://z-saw.co.jp/en/



@zetsaw_japan



@Z2010p8

Related product



SAW GUIDE BEST SET